

 ilooda

 <sup>755</sup>



**THE BEST COMBINATION OF  
755nm + 808 DIODE &  
MOTION SCANNING TECHNOLOGY  
FOR HAIR REMOVAL**

## VeLux<sup>755</sup> INTRODUCTION

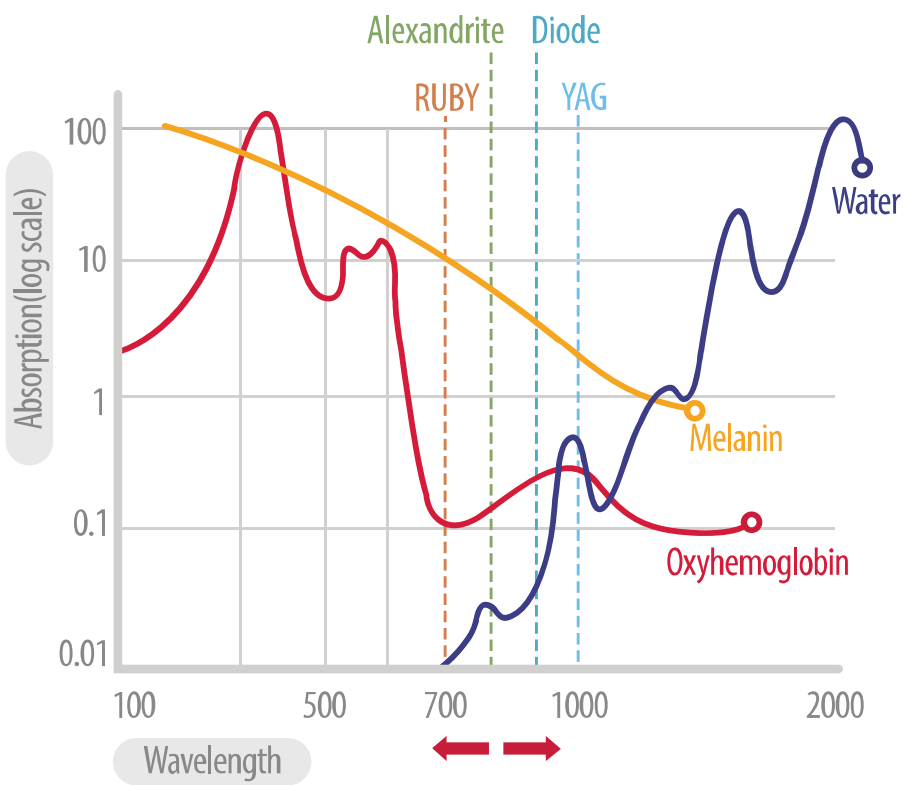
- ✔ Virtually Painless
- ✔ All Skin types



# Melanin Absorption

**VeLux<sup>755</sup>** is the most effective and safe permanent laser hair removal solution available today.

By combining motion scan technology and Diode laser based on Alexandrite wavelength, VeLux<sup>755</sup> allow practitioners to treat wide range of skins including dark skin quickly and comfortably achieving the best results in permanent laser hair removal.



# Why VeLux755



Perform faster treatment using an adjustable Hand Piece from 50\*15mm to 10\*15mm, allowing practitioners to quickly treat larger areas. While giving the patient a safe and effective treatment without the use of Gel or Anesthetic.



VeLux<sup>755</sup> new diode laser based on Alexandrite wavelength and Diode laser. Allow high energy absorption by the melanin. Using ALEX based Diode with its powerful contact cooling, comfort and low maintenance provides a wide range of treatment of hair type and color especially light-colored and thin hair.



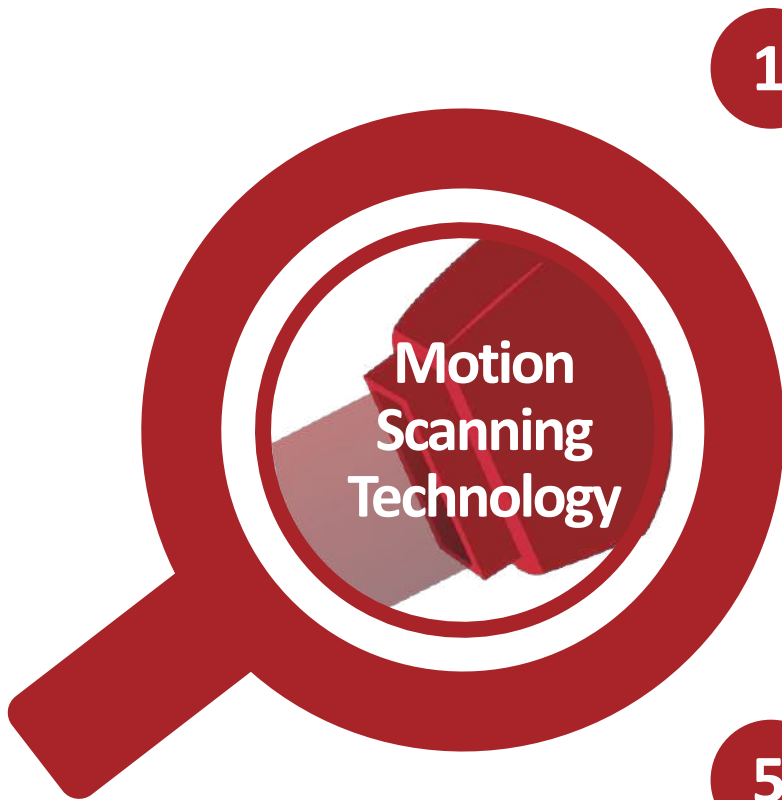
VeLux<sup>755</sup> powerful cooling using sapphire cooling down to 5°C combines with the optional air-cooling and its higher absorption of 775nm and 808nm wavelength gives the optimal safety during treatment without the use of Gel or Anesthetic.



VeLux755 Smart Gui was built with the physician in mind and includes a user-friendly GUI, that is equipped with Easy and Pro mode for ease of use.

# Why VeLux755

## 5 Points that makes VeLux<sup>755</sup> the Fastest and Safest Hair Removal device



1

High Absorption 755nm Alex/Diode

2

Bigger Handpiece 50\*15

3

Powerful Cooling (Contact + Scanning)

4

Smart Target Motion

5

High Absorption 755nm Alex/Diode

# Motion Scanning technology

Motion Scanning Technology is the new method for a fast hair removal Treatment.

## How it works

**A**

The laser will divide the targeted area to 5 sections.

**B**

The laser will scan each area from top to bottom.

**C**

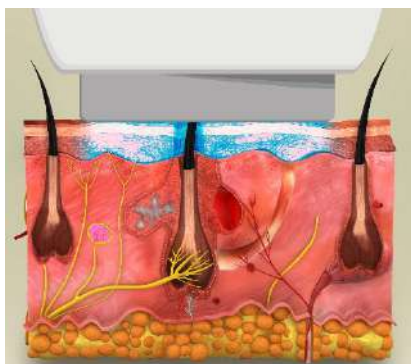
Using this method will insure less pain and more effective treatment for permanent hair removal.



\* You can change the sequence for the scanning

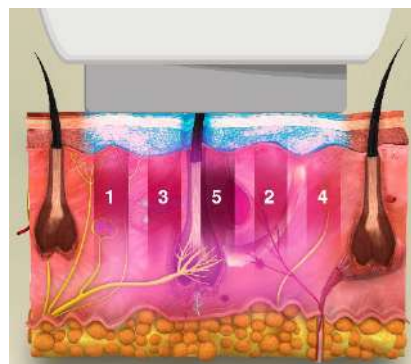
# Smart Target Motion

**SMART TARGET MOTION** offers a breakthrough in safety for hair removal technology. SMART TARGET MOTION combined with motion technology Diode/Alex laser will scan the targeted Area randomly which gives time for the scanned area to cool down, this technology will allow the practitioners to give the treatment quickly and comfortably.



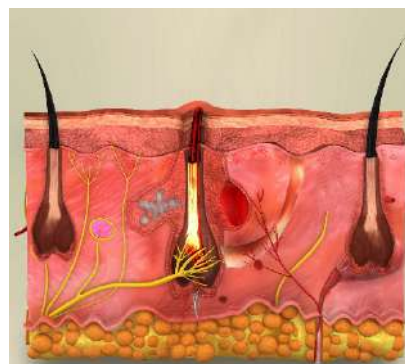
## ① Powerful Cooling

Velux 755's ideal sapphire cooling down to 5°C helps protect the epidermis.



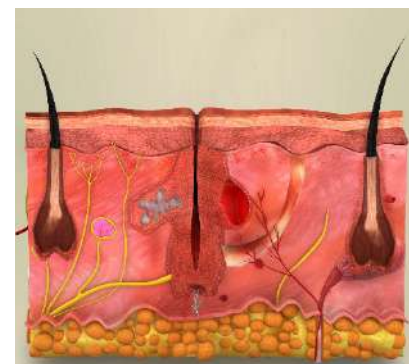
## ② Laser Radiation

Scanning laser beam randomly for minimal pain during treatment.



## ③ End - Point

Mild erythema and edema might occur on the treated areas.



## ④ Hair Removal

Hair will start to disappear naturally.



## 3 Combined methods for the ultimate cooling

### How it works

**A**

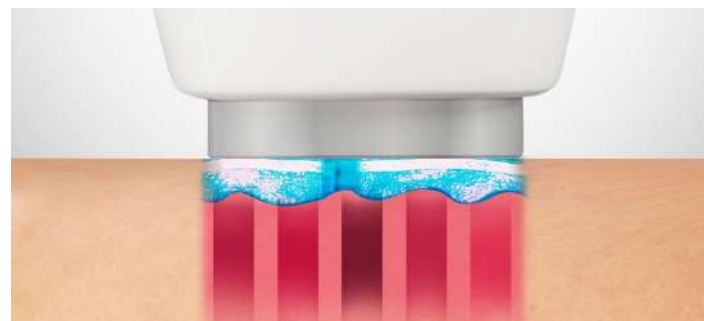
VeLux<sup>755</sup> ideal sapphire cooling down to 5°C helps protect the epidermis.

**B**

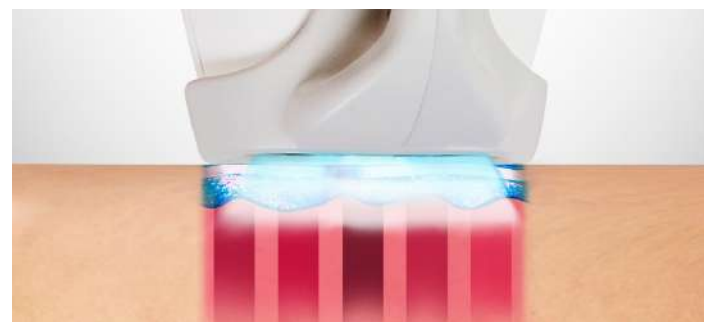
Smart Target Motion will give time for the scanned area to cool down during treatment.

**C**

Extra Air cooling from the Hand piece .



Contact Cooling



Contact Cooling plus Extra Air Cooling



# Comparison

VeLux 755 advance Scanning Technology offers a faster treatment with Less overlap due to its bigger spot size of 50\*15 , and the Scanning Technology will prevent any missing shots due the difficulty of achieving the optimal overlap that a lot of spot machines have.

## Hair Removal – Spot versus Continuous Scanner

As effective as established methods



**Position of applicator**

Difficult to achieve optimal overlap

Optimal positioning in large spot due to scanner

**Penetration depth**

Depending on spot size

Deep homogeneous heating in the hair root layer

**Treatment time**

Long because of many new positionings

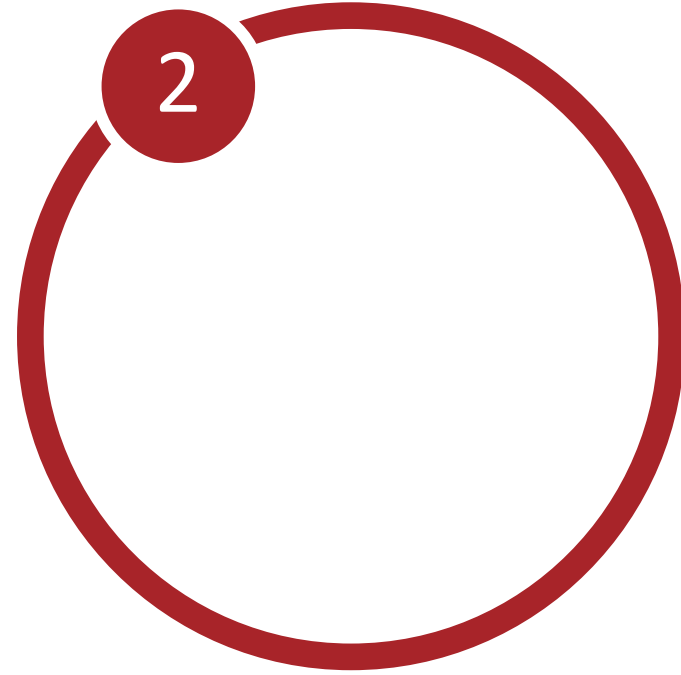
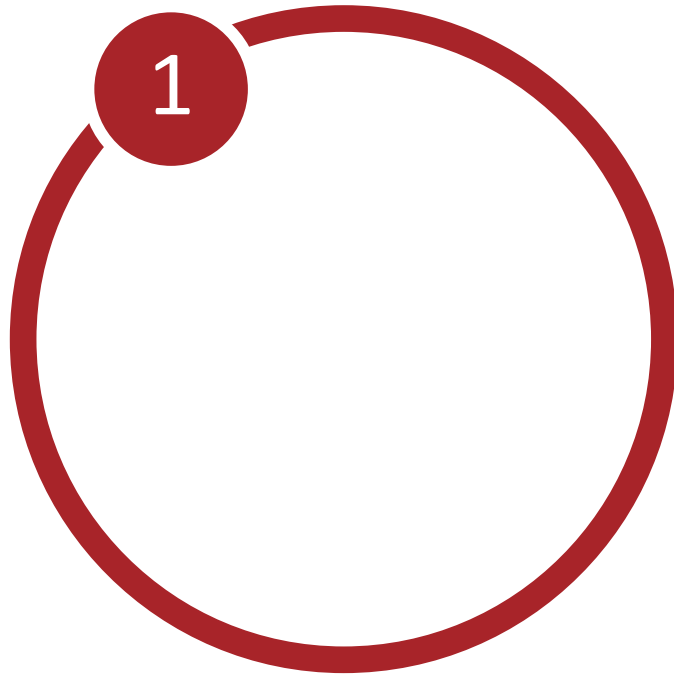
Short because of few new positionings

# Adjustable Hand piece



for ease of use.

- ✔ Adjustable Handpiece with a variety of sizes 50 to 10mm.
- ✔ Using adjustable Handpiece will allow to treat big and small areas which will save time during the treatment.



- ✓ Adjustable Handpiece with a variety of sizes 50 to 10mm.
- ✓ Using adjustable Handpiece will allow to treat big and small areas which will save time during the treatment.

# Clinical Evaluation ( 1 month)

2016. 11. 22  
Before 1<sup>st</sup> TX

2016. 11. 22  
After 1<sup>st</sup> TX  
immediately

2016. 12. 01  
After 9days of 1<sup>st</sup> TX

2016. 12. 08  
After 2<sup>nd</sup> TX  
immediately

2016. 12. 14  
After 6days of 2<sup>nd</sup> TX



**Right Leg Treatment Method : 1 pass using 26J/cm<sup>2</sup> Fluence, No Gel, 15\*50 spot size**

# Comparison

MODEL	VELUX755	LINSCAN	QUANTEL DERMA	Gentle Max Pro	Clarity
Manufacturer	ILOODA	GME	LEDA EPI	Candela	Revlight
<u>Hair removal Laser</u>					
Laser type	Diode	Diode	Diode	Nd:Yag,ALEX	Nd:Yag,ALEX
Wavelength	755nm	808nm	808,980	755, 1064	755/1064
Energy	100j/cm <sup>2</sup>	100j/cm <sup>2</sup>	60j/cm <sup>2</sup>	80j/cm <sup>2</sup>	60j/cm <sup>2</sup>
Operation mode	1)EASY mode : With pre set parameters 2) Pro Mode	NA	NA	1)ALEX Mode 2) Nd:Yag Mode	1)ALEX Mode 2) Nd:Yag Mode
Treatment Mode	SCAN Mode	SCAN Mode	SCAN Mode	Single Shot Mode	Single Shot
Shot Time	2.3 sec	1 sec	1.8 sec	NA	NA
Spot size (mm)	1)50 mm x 15 mm ( Adjustable spot size 10mm up to 50mm) 2) Facial Tip	1)50 mm x 15 mm	1)EP1 808 : 50X12 /12x12 2)EPI 980 : 50X12 /12x12	1) 6 mm, 8 mm, 10 mm , 12 mm 15 mm,18 mm	1)Spot Size (9 types) (2, 3, 5, 8, 10, 12, 15, 18, 20 mm)
Cooling System	1)Contact cooling (5C) 2)Optional Air Cooling	1) Contact cooling	1)Optional Air Cooling	1)Dynamic Cooling Device (DCD) 2)Air Cooling	1)Hybrid Cooling 2)Cryo ICD , AirCooling
Pain	Less pain using 3 types of cooling	More pain ( only 1 cooling type)	More pain ( only 1 cooling type)	Less pain using 2 types of cooling	Less pain using 2 types of cooling

# Velux 755 Vs Gentle Max

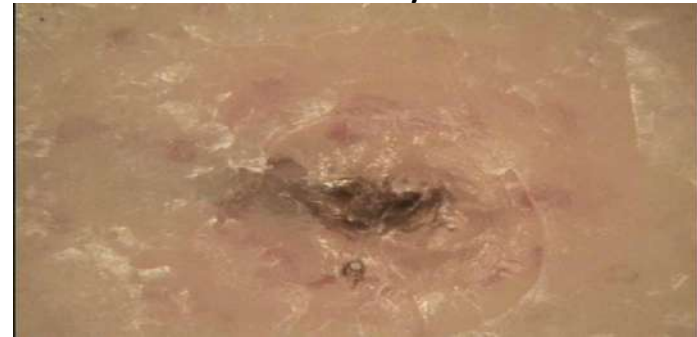
## Velux (Right Leg)

2016. 11. 04  
After 1<sup>st</sup> TX  
immediately



## Gentle Max (Left Leg)

2016. 11. 04  
After 1<sup>st</sup> TX  
immediately



In the case of Gentle Max, hair is popped and looks like a clean hair removal, and Velux has no hair popping, However, Gentle Max can cause untreated areas in the procedure and should overlap because it is a spot type.